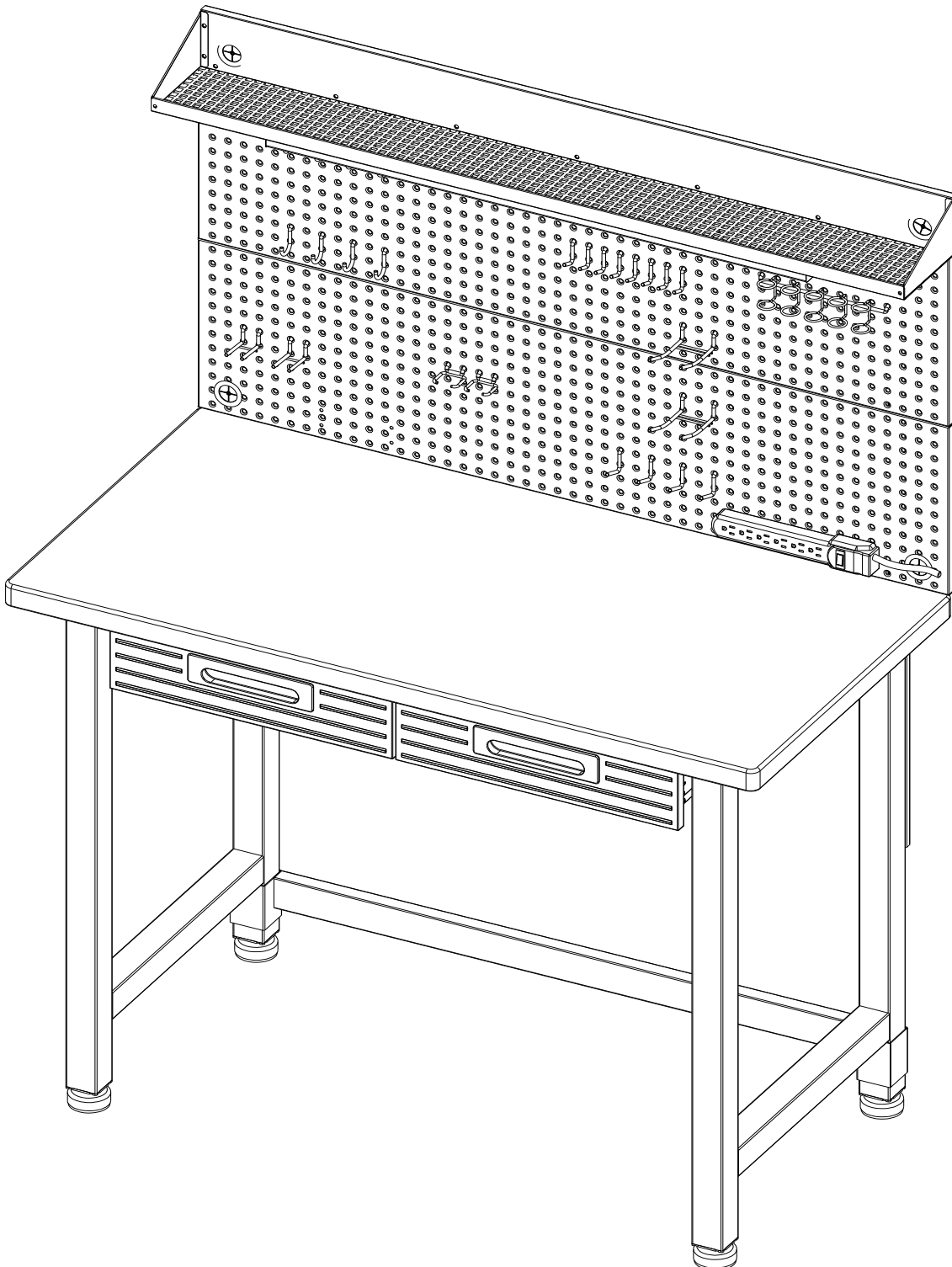


ASSEMBLY INSTRUCTIONS

UltraHD Lighted Workcenter (Model No. 20246)

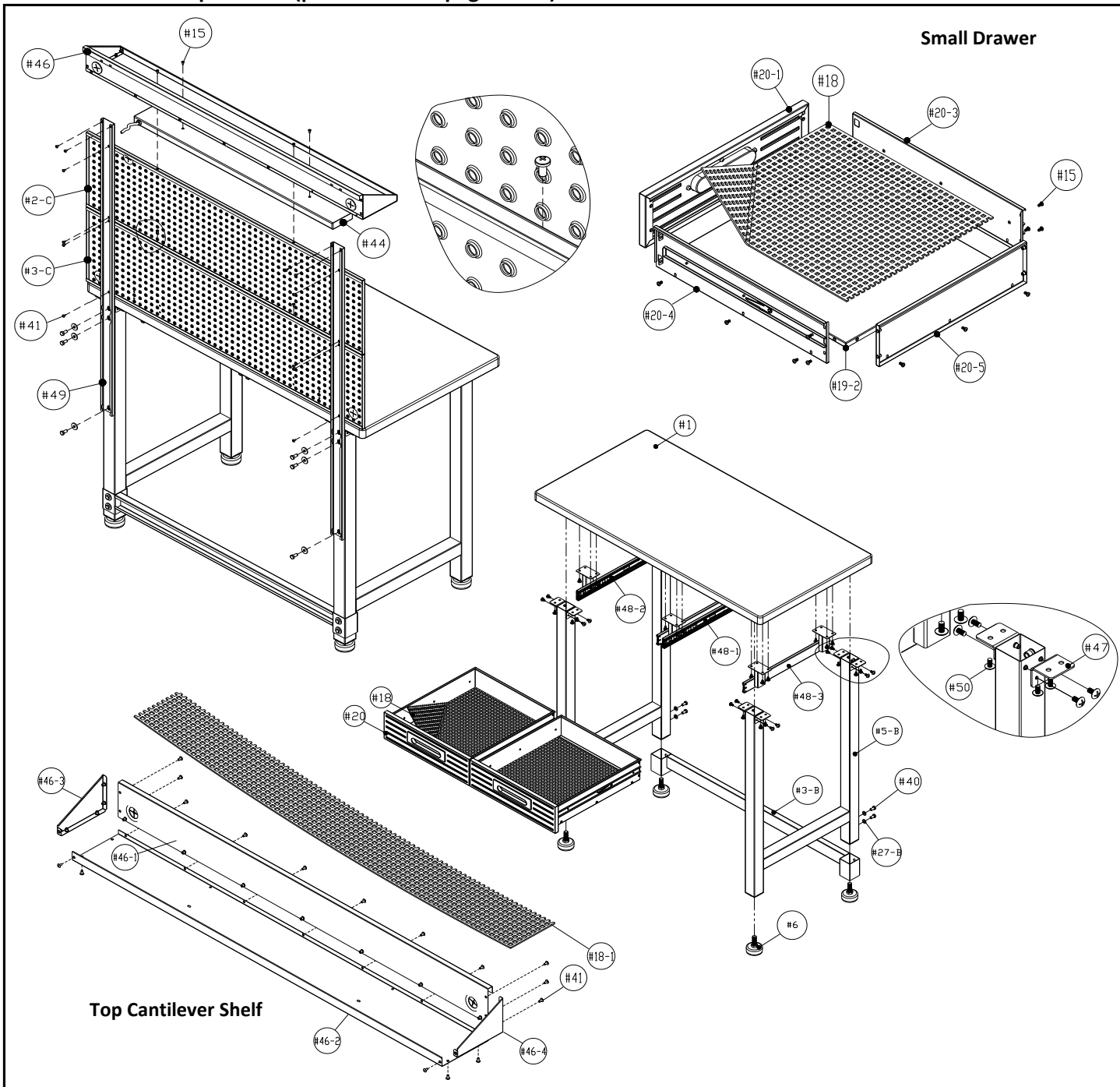
48 in W X 24 in D X 65.5 in H

(1.21 m x 60.9 cm x 1.66 m)



PARTS LIST (pg 1 of 8)

Please check the parts carefully according to the parts list. If you are missing any parts, please contact our customer service department (please refer to page 8 of 8).

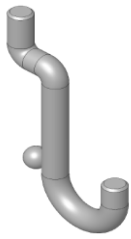


| No. | Parts | Qty. |
|-------|--------------------------|------|
| #1 | SOLID HARDWOOD BOARD TOP | 1PC |
| #2-C | TOP PEGBOARD PANEL | 1PC |
| #3-B | BOTTOM CROSSBAR | 1PC |
| #3-C | BOTTOM PEGBOARD PANEL | 1PC |
| #5-B | LEG PIECE | 2PCS |
| #6 | LEVELING FOOT | 4PCS |
| #18 | DRAWER MAT | 2PCS |
| #18-1 | TOP CANTILEVER SHELF MAT | 1PC |
| #19-2 | DRAWER BASE PANEL | 2PCS |
| #20-1 | SMALL DRAWER FRONT PANEL | 2PCS |
| #20-3 | SMALL DRAWER LEFT PANEL | 2PCS |
| #20-4 | SMALL DRAWER RIGHT PANEL | 2PCS |

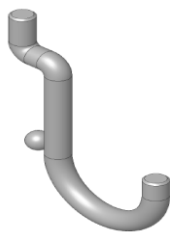
| No. | Parts | Qty. |
|-------|----------------------------------|------|
| #20-5 | SMALL DRAWER BACK PANEL | 2PCS |
| #44 | LAMP | 1PC |
| #46-1 | TOP CANTILEVER SHELF BACK PANEL | 1PC |
| #46-2 | TOP CANTILEVER SHELF BASE PANEL | 1PC |
| #46-3 | TOP CANTILEVER SHELF LEFT PANEL | 1PC |
| #46-4 | TOP CANTILEVER SHELF RIGHT PANEL | 1PC |
| #47 | "L" BRACKET | 8PCS |
| #48-1 | SMALL DRAWER MIDDLE SUPPORT | 1PC |
| #48-2 | SMALL DRAWER LEFT SUPPORT | 1PC |
| #48-3 | SMALL DRAWER RIGHT SUPPORT | 1PC |
| #49 | PEGBOARD LONG SUPPORT BAR | 2PCS |

PARTS LIST (pg 2 of 8)

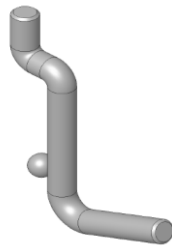
Please check the parts carefully according to the parts list. If you are missing any parts, please contact our customer service department (please refer to page 8 of 8).



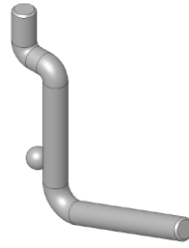
#100



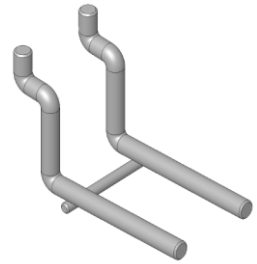
#101



#102



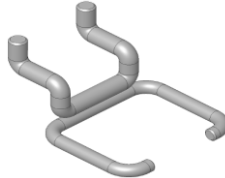
#103



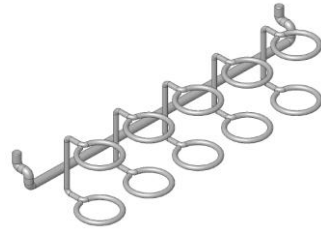
#104



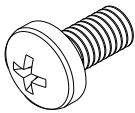
#105



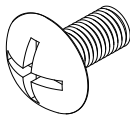
#106



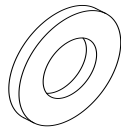
#107



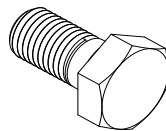
#15



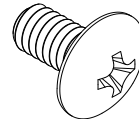
#50



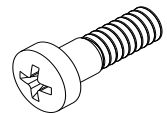
#27-B



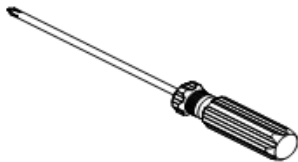
#40



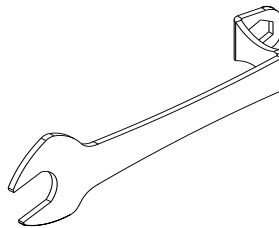
#41



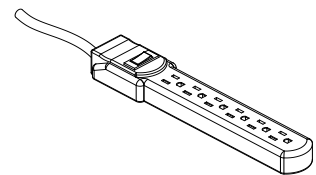
#51



#21



#25

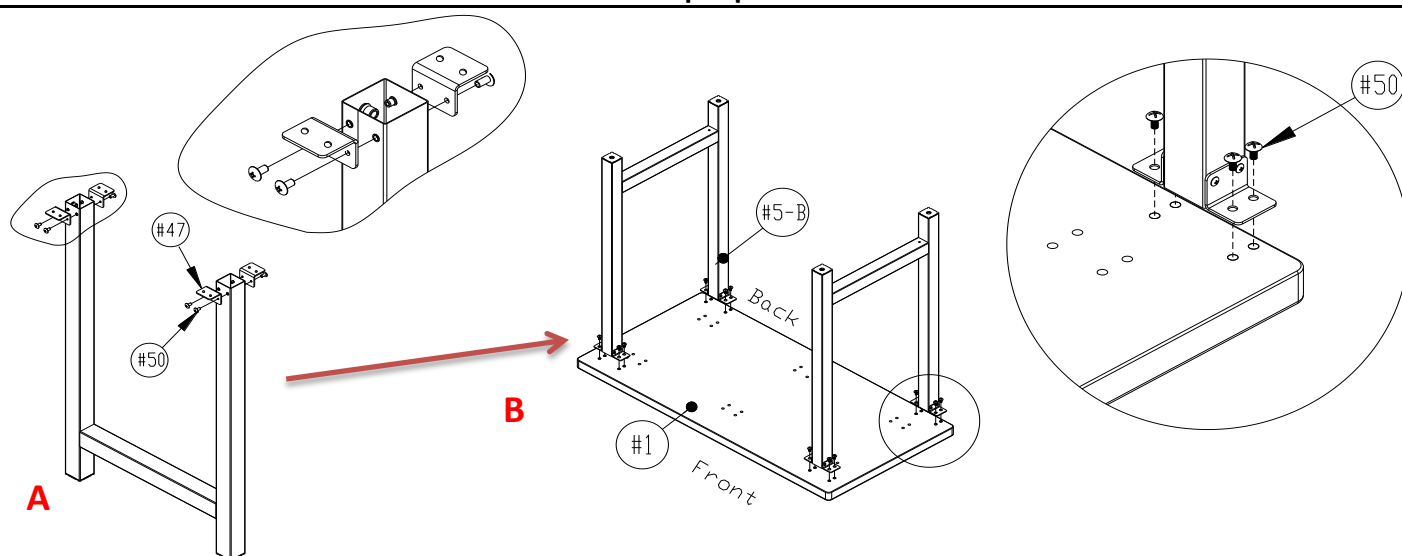


#45

| No. | Parts | Qty. | No. | Parts | Qty. |
|-------|--------------------|-------|------|------------------------|------|
| #15 | SCREW B (M4 x 8L) | 46PCS | #100 | 1/2" CURVED | 4PCS |
| #21 | SCREW DRIVER | 1PC | #101 | 1" CURVED | 4PCS |
| #25 | WRENCH | 1PC | #102 | 1" STRAIGHT | 4PCS |
| #27-B | WASHER | 10PCS | #103 | 1.5" STRAIGHT | 4PCS |
| #40 | SCREW E (M8 x 18L) | 10PCS | #104 | 2" DOUBLE PRONG | 2PCS |
| #41 | SCREW F (M4 x 8L) | 29PCS | #105 | 4" CURVED DOUBLE PRONG | 2PCS |
| #45 | POWER STRIP | 1PC | #106 | 2" PLIER HOLDER | 2PCS |
| #50 | SCREW I (M6 x 15L) | 56PCS | #107 | 2" MULTI-TOOL HOLDER | 1PCS |
| #51 | STUD SCREW J | 8PCS | | | |

ASSEMBLY INSTRUCTIONS (pg 3 of 8)

***NOTE: We recommend TWO people to assemble the workbench.**



Step 1. Install (#5-B) Leg Piece.

A: Open the package, and put the parts aside. Then, attach the (#47) "L" Bracket to the (#5-B) Leg Piece, use (#50) Screw I to tighten. Repeat Step A to install (#47) "L" Brackets to another one (#5-B) Leg Piece.

Note: Tighten the all the screws after the (#47) Brackets are flush with the (#5-B) Leg Piece.

B: Attach the (#5-B) Leg Pieces to the back of the (#1) Solid Hardwood Board Top, line up the screw holes, use (#50) Screw I and (#21) Screwdriver to tighten.

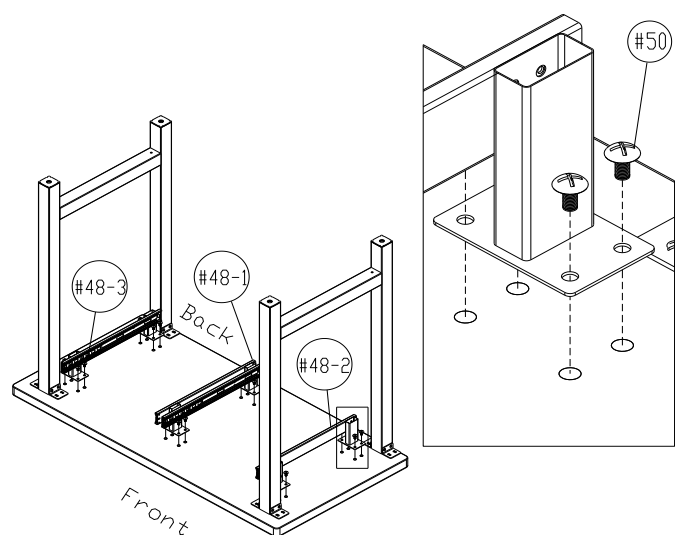
Note: Assemble the workcenter on top of the cardboard packaging to help avoid scratching the solid hardwood top.

Step 2. Install (#48-1) Small Drawer Middle Support, (#48-2) Small Drawer Left Support, (#48-3) Small Drawer Right Support.

Attach the (#48-1) Small Drawer Middle Support to the back of (#1) Solid Hardwood Board Top Back, line up the screw holes, use (#50) Screw I and (#21) Screwdriver to tighten.

Repeat this step to install (#48-2) Small Drawer Left Support and (#48-3) Small Drawer Right Support.

NOTE: Do not fully tighten the screws. This will help you make any adjustments for alignment.

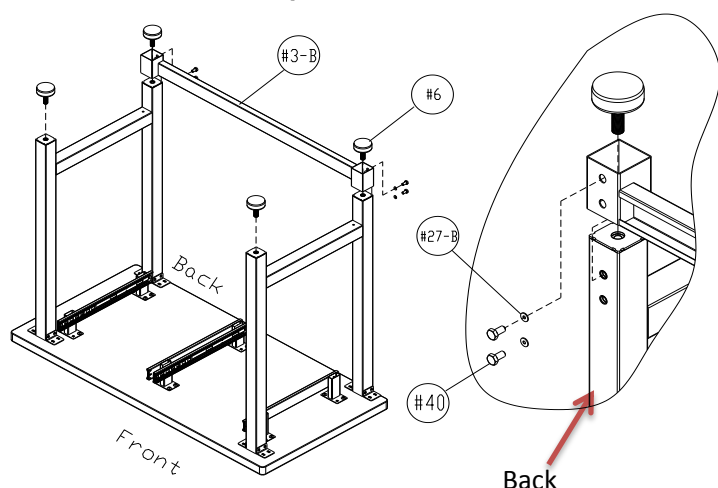


Step 3. Install (#3-B) Bottom Cross Bar and (#6) Leveling Feet.

Attach the (#3-B) Bottom Cross Bar to the back of (#5) Leg Piece, line up the screw holes, use (#40) Screw E with (#27-B) Washer and (#25) Wrench to tighten.

After installing (#5-B) Leg Pieces, attach (#6) Leveling Feet to (#5-B) Leg Pieces, use (#25) Wrench to tighten.

NOTE: Upturn the workbench once you finish this step.



ASSEMBLY INSTRUCTIONS (pg 4 of 8)

***NOTE: We recommend TWO people to assemble the workbench.**

Step 4. Install (#49) Pegboard Long Support Bar.

Attach (#49) Pegboard Long Support Bar to the back of the workbench, line up the screw holes, use (#40) Screw E with (#27-B) Washer to tighten.

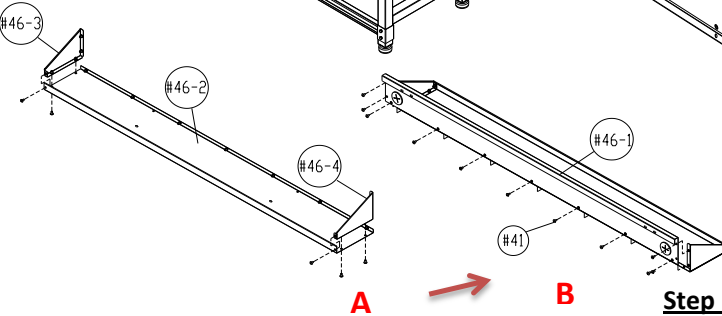
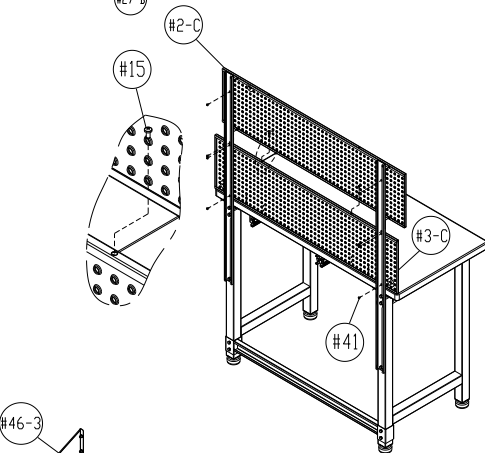
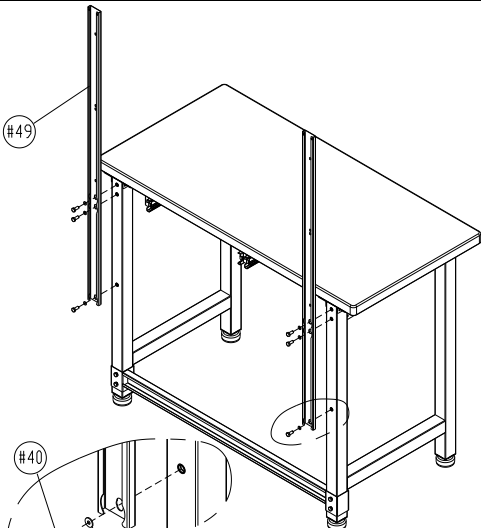
NOTE: Do not fully tighten the screws. This will help you make any adjustments to alignment later.

Step 5. Install (#3-C) Bottom Pegboard Panel and (#2-C) Top Pegboard Panel.

Attach (#3-C) Bottom Pegboard Panel to back edge of workbench and (#49) Pegboard Long Support Bar, line up the screw holes, use (#41) Screw F and (#21) Screwdriver to tighten.

NOTE: Do not fully tighten the screws. This will help you make any adjustments to alignment later.

Attach (#2-C) Top Pegboard Panel to the top of (#3-C) Bottom Pegboard Panel and (#49) Pegboard Long Support Bar, line up the screw holes, use (#41) Screw F and (#21) Screwdriver to tighten.



Step 6. Install (#46) Top Cantilever Shelf .

A). Attach the (#46-3) Top Cantilever Shelf Left Panel and the (#46-4) Top Cantilever Shelf Right Panel to (#46-2) Top Cantilever Shelf Base Panel. Use (#41) F screws to tighten.

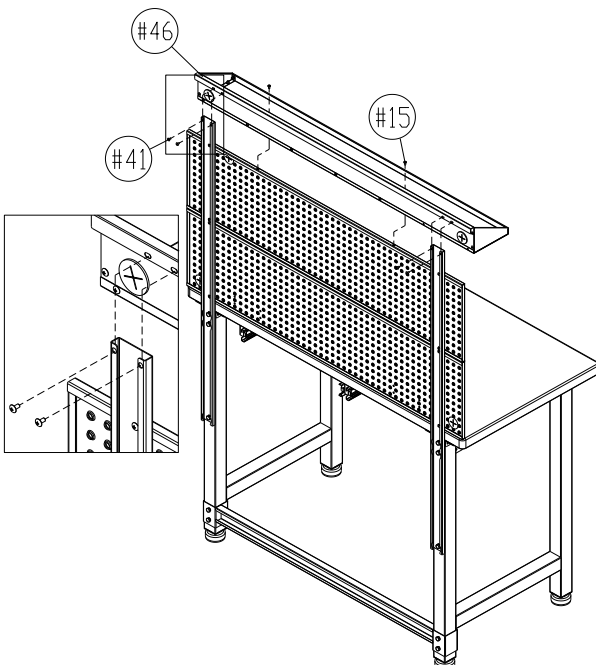
NOTE: Do not fully tighten the screws. This will help you make any adjustments for alignment later.

B). Make sure to slide the back panel underneath the edge of (#46-2) Top Cantilever Shelf Base Panel. Use (#41) F screws to tighten.

Step 7. Install Assembled (#46) Top Cantilever Shelf to workbench.

Attach assembled (#46) Top Cantilever Shelf to (#2-C) Top Pegboard Panel and (#49) Pegboard Long Support Bars, line up the screw holes, use (#41) Screw F to tighten.

NOTE: Do not fully tighten the screws. This will help you make any adjustments for alignment later.

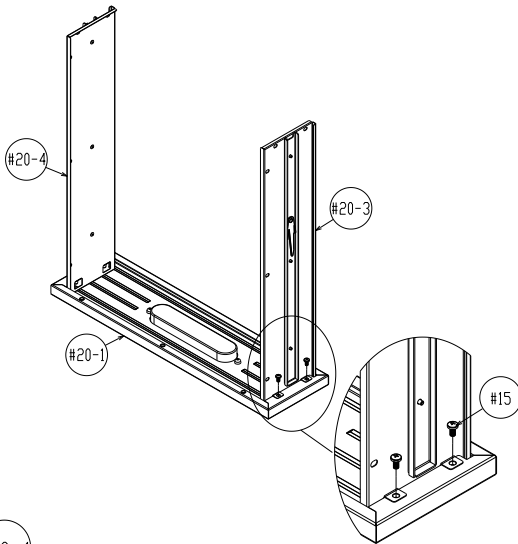


ASSEMBLY INSTRUCTIONS (pg 5 of 8)

***NOTE:** We recommend TWO people to assemble the workbench.

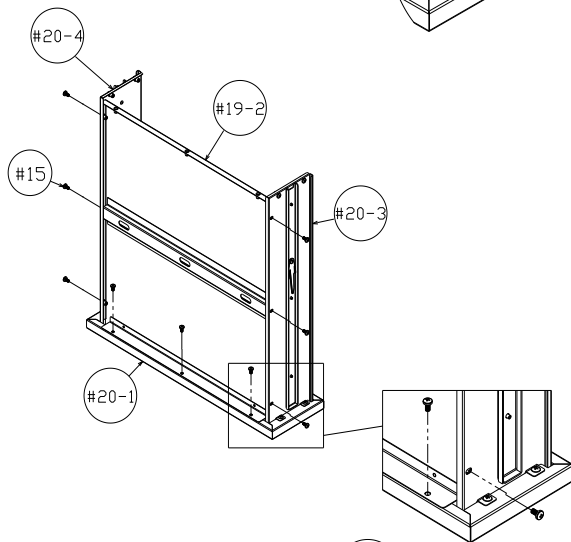
Step 8. Install (#20-3 & #20-4) Left & Right Small Drawer Side Panels.

Fit and attach the (#20-3 & #20-4) Left & Right Small Drawer Side Panels to the (#20-1) Small Drawer Front Panel. Make sure the (#20-3 & #20-4) Left & Right Small Drawer Side Panels are placed in all the way making contact with the rear of the (#20-1) Small Drawer Front Panel. Line up the screw holes and use (#15) Screw B to tighten.



Step 9. Install (#19-2) Drawer Base Panel.

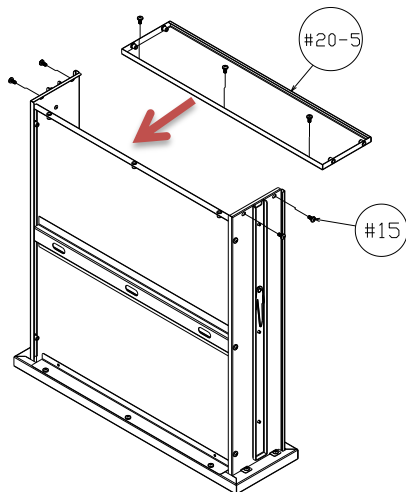
From above, fit and attach (#19-2) Drawer Base Panel between the (#20-3 & #20-4) Left & Right Small Drawer Side Panels and into the back of the (#20-1) Drawer Front Panel. Line up the screw holes and use (#15) Screw B to tighten.



NOTE: Do not fully tighten the screws. Once you adjust all the parts in position, tighten all screws.

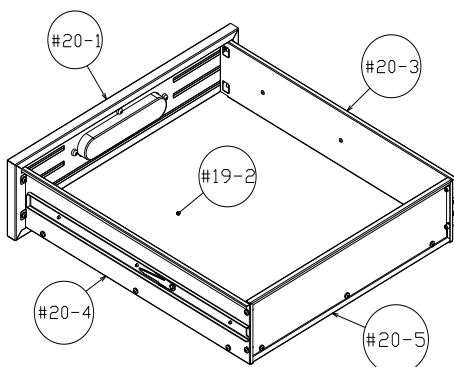
Step 10. Install (#20-5) Small Drawer Back Panel.

Attach the (#20-5) Small Drawer Back Panel to the rest of the assembled drawer. Line up the screw holes and use (#15) Screws B to tighten.



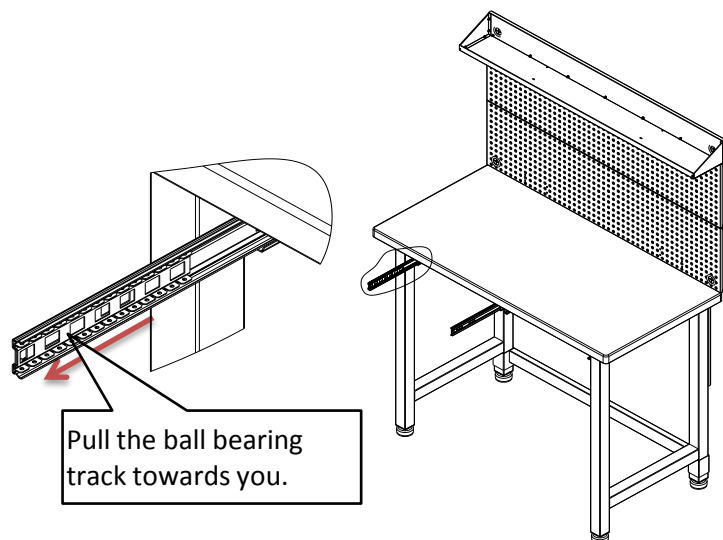
Repeat Steps 8-10 to assemble another drawer.

NOTE: Once assembled, you should have two small Drawers.



ASSEMBLY INSTRUCTIONS (pg 6 of 8)

***NOTE:** We recommend TWO people to assemble the workbench.

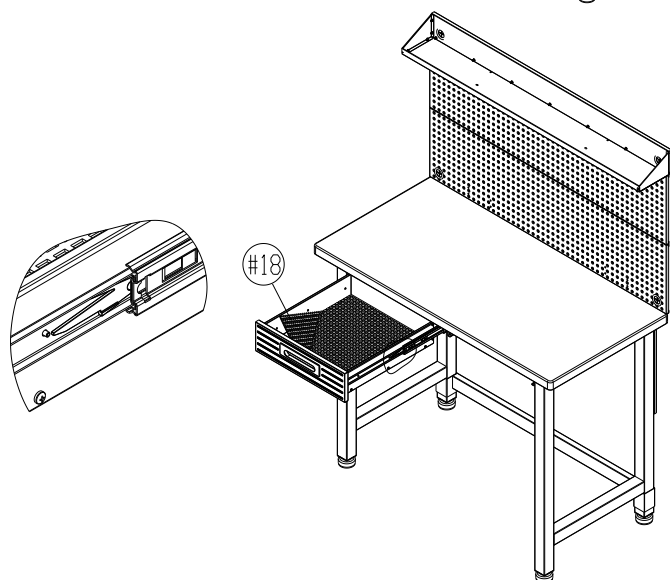


Step 11. Insert Drawers.

Pull out the drawer sliders and inner ball bearing track completely. Then attach and fit the Drawer to the inner track of the sliders and slide drawers in.

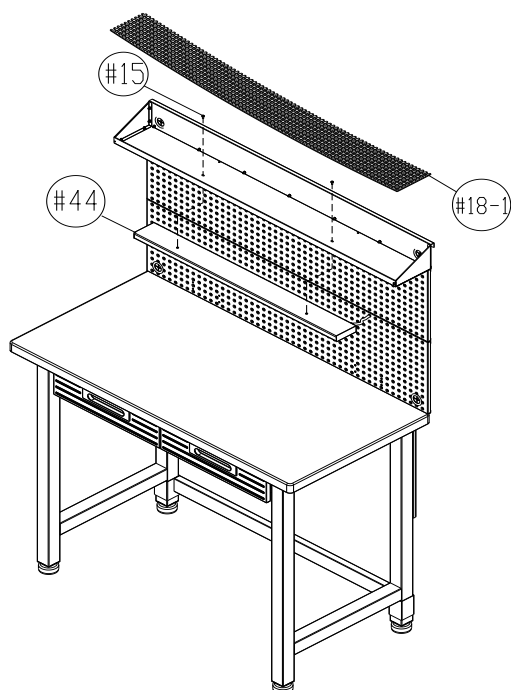
WARNING: Pull out the Ball Bearing track towards you.

NOTE: Once you insert the drawers, tighten the screws for (#48-1) Small Drawer Middle Support, (#48-2) Small Drawer Left Support and (#48-3) Small Drawer Right Support.



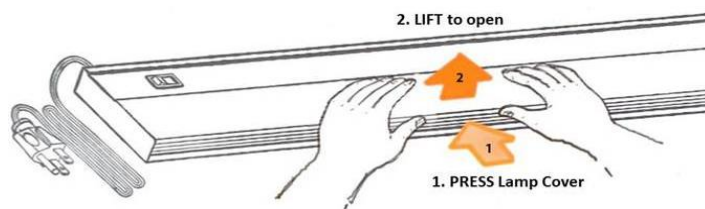
Step 12. Place (#18) Drawer Mats .

After sliding in the two Drawers, place (#18) Drawer Mats inside the drawers or you can place the (#18) Drawer Mats inside the drawers before you slide them in.



Step 13. Install (#44) Lamp.

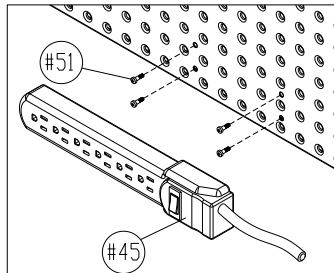
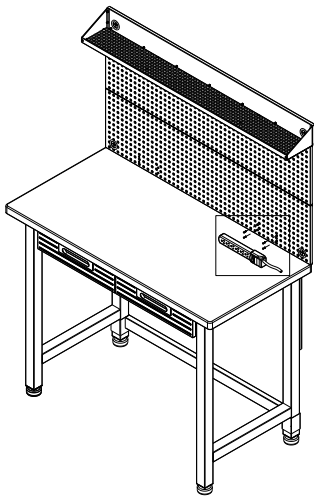
A). Open lamp cover by press and lifting as shown in the diagram below. Remove the cardboard protective sleeve by twisting out the light tube. Install the light tube and cover back to original position.



B). Make sure the power cord goes through Rubber Grommet of (#2-C) Top Pegboard Panel. Attach (#44) Lamp under the assembled (#46) Top Cantilever Shelf. Line up the screw holes, use (#15) Screw B to tighten. Then place the (#18-1) Top Cantilever Mat in place.

ASSEMBLY INSTRUCTIONS (pg 7 of 8)

***NOTE:** We recommend TWO people to assemble the workbench.



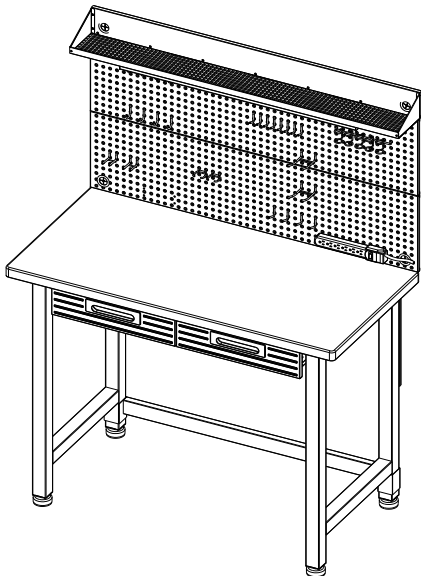
Step 14. Place (#45) Power Strip.

Insert and screw (#51) Stud Screw J to (#3-C) Bottom Pegboard Panel, then, hook (#45) Power Strip on and make sure the power cord goes through Rubber Grommet of (#3-C) Bottom Pegboard Panel.

NOTE: You can position (#45) Power Strip on the left or right side of the (#3-C) Bottom Pegboard Panel.



[!] CAUTION: Potential Shock or Fire Hazard. This unit is not intended for use in wet or potentially wet locations, such as showers, saunas, under or near fishtanks, sinks, etc.



Step 15. Place (#100), (#101), (#102), (#103), (#104), (#105), (#106), (#107) Hooks to Pegboard as you desire.

UltraHD Wood Top

Although great care is taken to hand select consistent wood top color and grain for UltraHD products, there can and will be natural variations in color and graining between finished products. These variations contribute to the beauty of using a natural material as a workbench and are considered standard quality. Variations of color within these standards and minor scratches in the clear coat finish will not be a reason for replacement. If the wood top is received with excessive damage or splitting, Seville Classics will guarantee replacement of the wood top.

Restore Shallow Scratches or Chips

If the wood top becomes scratched and chipped over time or during assembly, a Polyurethane finish can be applied to help restore the wood's natural texture, as well as protect the surface from future damage.

Applying a Polyurethane Coating

Please follow the manufacturer's instruction on the product for application.

CONTACT INFORMATION (pg 8 of 8)

*If you are missing any parts, have any questions, or need additional assistance in assembly, please contact our **bilingual (English/Spanish)** customer service department at:

Seville Classics, Inc.

19401 South Harborage Way
Torrance, CA 90501
USA

Telephone: (800) 323-5565 within USA

Hours: 9:00am - 4:30pm (Pacific Standard Time)

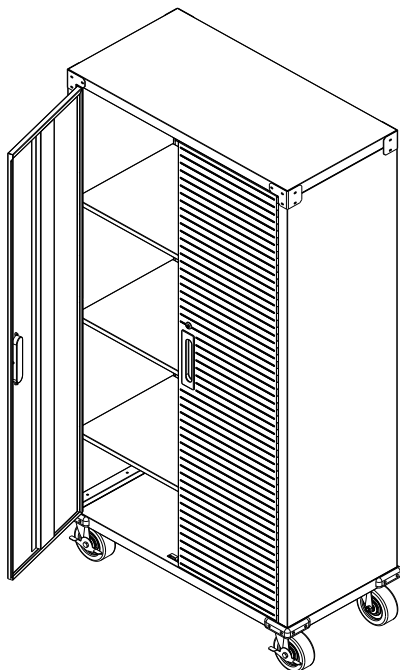
Fax: (310) 533-3899

E-mail: support@sevilleclassics.com

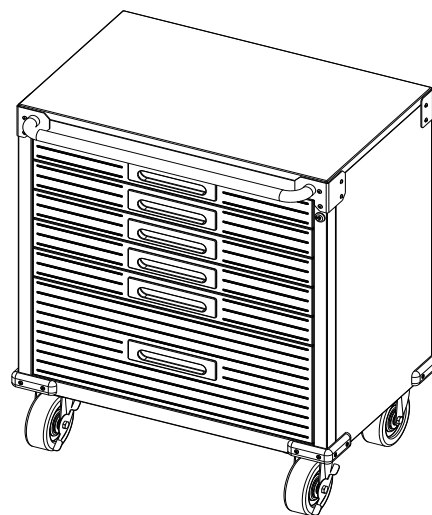
Website & Online Store: www.sevilleclassics.com

*****Please visit our website or call and inquire about our additional UltraHD Line*****

UltraHD Line

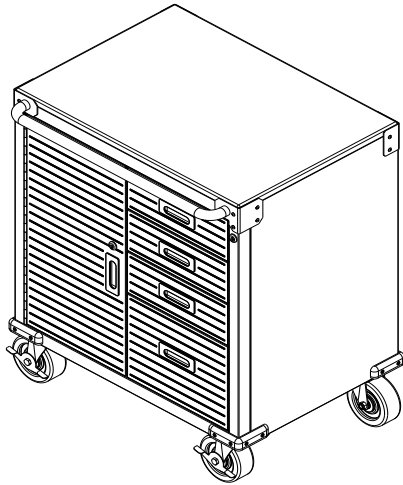


Model No. 16234
UltraHD Rolling Cabinet

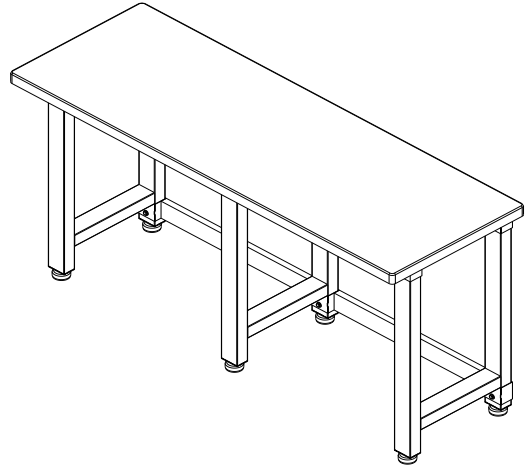


Model No. 20204
UltraHD 6- Drawer Rolling Cabinet

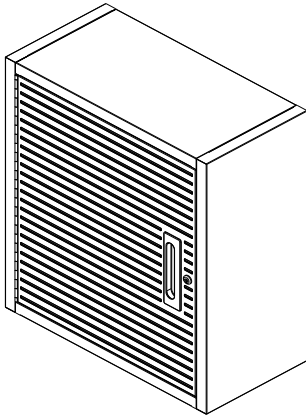
UltraHD Line



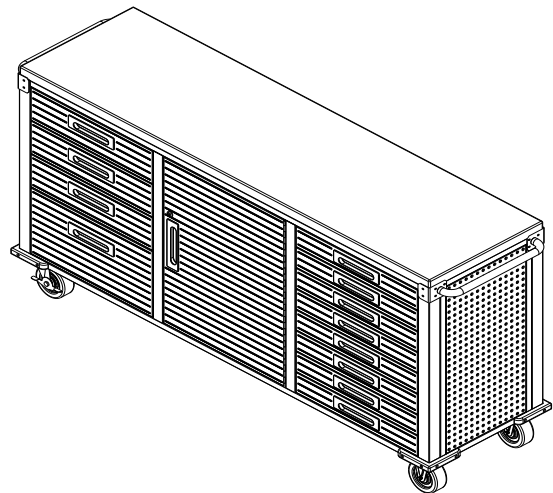
Model No. 20205
UltraHD Rolling Cabinet



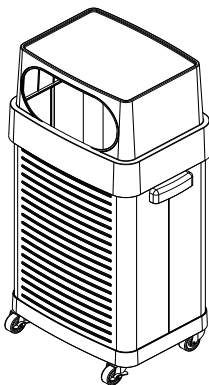
Model No. 20206
UltraHD Workbench



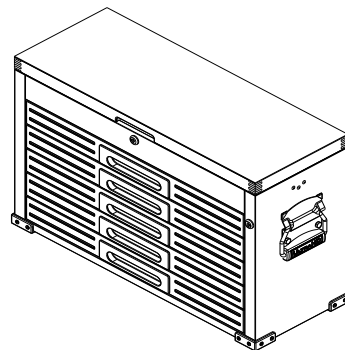
Model No. 20209
UltraHD Wall Cabinet



Model No. 20242
UltraHD Rolling Workbench



Model No. 20215
UltraHD Trash Bin



Model No. 20254
UltraHD Tool Chest