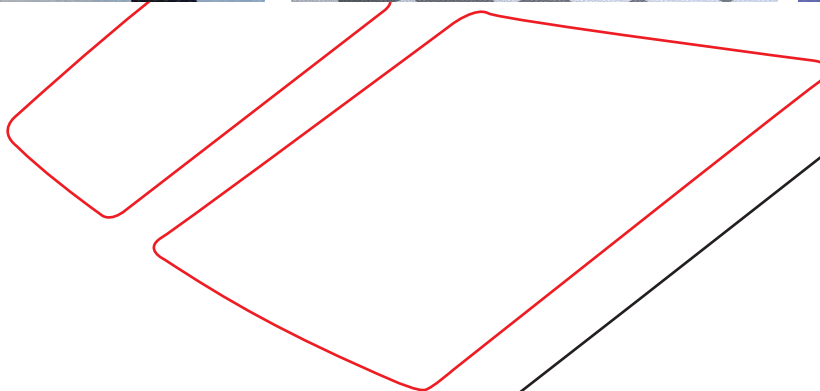




SPEEDWAY

SPEEDWAY TILE INSTALLATION INSTRUCTIONS



BEFORE YOU BEGIN

ABOUT SPEEDWAY TILES:

A Speedway garage floor is made up of tiles, each measuring 12" square. These tiles are connected by a simple, but precise interlocking mechanism. The picture shows the post side and the receiver sides of the tile. (See image 1)

EXPANSION:

Speedway tile is a polypropylene plastic floor, which expands and contracts with temperature changes. For this reason, it is important to leave at least 1/2" space between the tile and any stationary object such as a wall, support leg, cabinetry, etc.

SUBSURFACE REQUIREMENTS:

It is important that the surface of the substructure enables the Speedway to expand and contract. If the tiles expand without being able to slide, it could potentially cause buckling.

Speedway can be laid over structural cracks (no wider than 1/2") in the subsurface. Sharp cracks should be faceted or rounded so that the tiles don't "catch" when the floor expands and contracts.

TOOLS:

- Circular saw, jigsaw or table saw (with fine tooth blade)
- Utility Knife
- Tape Measure
- Marker

SUBSURFACE PREPARATION:

- Clear the area to be covered of all removable objects.
- Sweep or vacuum any excess dirt and debris off the subsurface. (Image 3)

Image 1

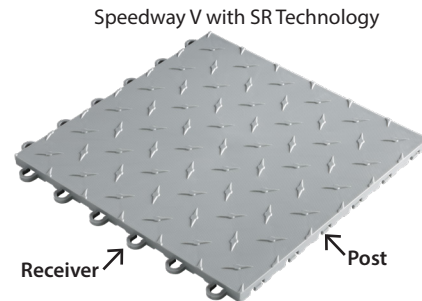


Image 2



Image 3



INSTALLATION

STEP 1

Facing your garage door opening, lay the first tile along the garage wall on the left side and attach the first ramp edge to the bottom of the tile facing the door opening. The tile should be positioned with the Receiver loops facing the back wall of the garage and the right side wall.

The edge of the tile or ramp edge should be safely inside the opening of the garage door allowing the rubber seal on the bottom of the door to contact the garage floor not the tile.

**Note: If you have an elevated garage lip, please allow 2" of space between lip and edges. This will ensure even pressure and a secure floor every time you enter or exit your garage.*

STEP 2 & 3

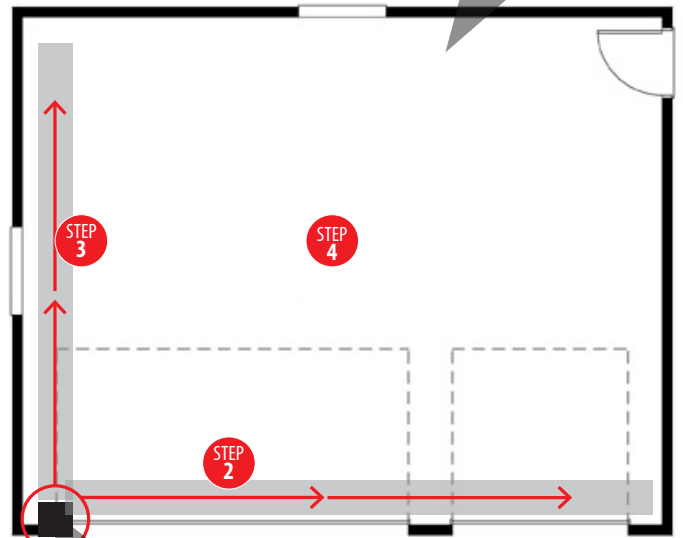
Continue building the first row of tile and ramp edging along the front garage opening working left to right. (Step 2 of diagram)

Assemble a row of tile along the left wall adding tiles until you reach the rear wall leaving the same space between tiles and wall. (Step 3 of diagram)

STEP 4

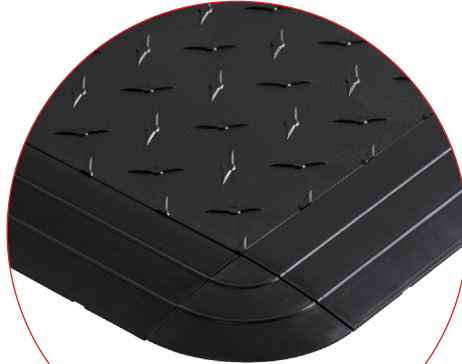
Continue filling in the remaining area to be covered working left to right and front to back. (Step 4 of diagram)

Note: It may be necessary to cut some tiles along walls or stationary objects using a combination of the tools listed above. Before cutting a tile confirm that the alignment is correct allowing the locking mechanism (Posts and Receivers) to function properly at connection points. See page 3 for instructions on how to trim tile.





SPEEDWAY RAMPS & CORNER ASSEMBLY



Speedway Tile, Ramp and Corner Assembly



reverse view of Post Ramp

Post Ramp

Corner

Receiver Ramp

reverse view of Receiver Ramp

TRIMMING TILE

Trimming the tiles to fit along an edge or to go around an obstacle may be necessary in order to fit properly. If this is necessary for your installation there are several options available for cutting the tile.

The tile can be trimmed using a table saw as shown in image 1.

The tile can be trimmed with a hand-held circular saw as shown in image 2. You will need to use a fine tooth blade to keep the saw from chipping the tile. This method works well if you have several tiles that need to be trimmed to the same length.

Another method for trimming tile is a sharp razor knife or box knife as shown in image 3.



Image 1



Image 2



Image 3

CARE AND MAINTENANCE

REPLACING TILES:

Tiles are replaced in a matter of seconds. Insert a putting knife into a gap between the tiles closest to the corner of the tile which does not have loops and pull up.

MAINTENANCE CLEANING:

Speedway tile can be cleaned in a variety of ways. A leaf blower or push broom can be used to remove most debris. If the tile surface is dusty or dirty then a power washer can be used – be sure to set it on a low-pressure setting. A damp towel or mop with mild cleaning solution can also be used.

Over time dirt, leaves, rocks and other debris may accumulate under the tile. If this does occur you can pull up or disengage the tiles in large sections and slide the tile out of the way to clean the subsurface.

This installation manual is provided for informational purposes only to give the consumer basic understanding of the installation process for Speedway products. The following procedures are in accordance with Speedway tile installations. Speedway makes no warranty as to, and bears no liability for, the content or use of this installation manual. Speedway will not be held liable for any "self-installed" systems. For self-installed systems, owner assumes all responsibility and liability. Speedway representatives will, however, remain available for any questions you may have during your installation.